



# 1999 Annual Report

Executive Summary

[www.rmit.edu.au/About/ar99](http://www.rmit.edu.au/About/ar99)





## Introduction

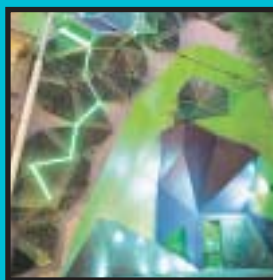
In 1999, RMIT University's emphasis on technological strengths, the global relevance of its teaching and research, the flexibility of its courses, and vocational orientation, ensured that it strengthened its position as the most popular choice of prospective students in Victoria.

Students, graduates and staff are in every way encouraged to contribute creatively, critically and responsibly to their professions and the community. As a corollary of this mission, the university has long articulated its commitment to equal opportunity, racial tolerance, cultural diversity and ethical behaviour.

RMIT's seven faculties offer a fully integrated range of courses from TAFE apprenticeships, certificates and diplomas; to bachelor degrees, graduate certificates and diplomas, masters degrees by research or course work, and professional or research doctorates. With over 50,000 students, including 12,000 international students, RMIT is one of Australia's largest multi-level universities.

Students have the flexibility to structure their study with double degrees, dual awards, pathways between TAFE and degree courses, as well as short courses and distance learning. Students also have the opportunity to work in industry while completing their degree.

RMIT is one of Australia's most successful international universities. This is recognised by RMIT having won the first Australian Export Award for Education in 1998, the Governor of Victoria Export Award for Education in 1998 and 1999, and the 1999 Business Asia News Magazine Award for best Australian service activity in Asia. Links with universities and colleges around the world allow RMIT staff and students to participate in exchanges, study abroad programs, and co-operative teaching and learning programs.



The city campus is located at the northern end of Melbourne's Central Business District, adjacent to Melbourne Central Station and the State Library of Victoria. The main body of the campus occupies two city blocks, with several faculties located in buildings elsewhere in the city centre.

The Bundoora campus is situated eighteen kilometres north-east of the city centre, on the fringe of suburban Melbourne. In contrast to the city campus, RMIT Bundoora is set

in forty-two hectares of extensive parkland. The university has invested more than fifty million dollars in developing the Bundoora campus (acquired in 1992), and the nearby RMIT Technology Estate, to fulfil RMIT's commitment to education and business in the northern metropolitan region.

The university's third campus, at Brunswick, came through the amalgamation with the Melbourne Institute of Textiles, on 1 January 1999. Situated six kilometres from the city, it has state-of-the-art specialist printing technology and textile facilities.

RMIT also occupies a number of other sites in and around the city. The most significant of these are at Fishermans Bend and Point Cook, which offer courses in aerospace technology.

RMIT has over twenty research centres and institutes. Supported by government and private funding, the centres are at the forefront of research in areas such as intelligent manufacturing systems, polymer blends, telecommunications, information technology, multimedia, design, transport, and workplace communications.

Established as the Working Men's College in 1887, RMIT became a university on 1 July 1992 under the Royal Melbourne Institute of Technology Act 1992.

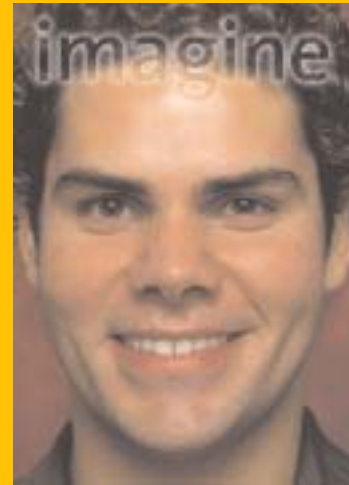
## Mission, vision and values

### RMIT's mission is to:

- provide technical and professional education that develops people for leadership and employment; and
- undertake research programs that address real world issues within an international and community context.

### The vision of the university is to:

- be a recognised world leader amongst universities that are multi-level, globally focused, diverse, student-centred, industry relevant and client and community responsive;
- deliver programs ranging from certificate level vocational programs through tailored programs for industry and community clients, in Australia and offshore, to diploma, bachelor, masters degree (coursework and research) and doctoral research programs;
- have graduates with excellent employment opportunities in areas relevant to the sophisticated global society of the new century, who provide leadership in a rapidly changing global community, have a desire for lifelong learning, and a strong affinity for RMIT;
- have an international reputation for the quality and practical orientation of its courseware, the outcomes of its applied research and development activities, and its contributions to community development;
- be the Australian leader in international education, with students from many countries studying at RMIT in Melbourne, and in the university's developing campuses throughout Asia;
- be renowned for forming innovative, creative and flexible partnerships with industry, the community and other educational institutions in teaching and learning, applied and interdisciplinary research programs (especially through the university's research institutes and centres), international education, and community development;
- be the Australian leader in the use of information and communications technology in the design and flexible delivery of innovative education, training and research programs, and in the provision of quality client-focused management, learning support, administrative and student services;
- be a community of some 55,000 students, including 15,000 offshore, and 3,000 staff drawn from an enormous variety of cultural, racial, linguistic and religious backgrounds who study or work in an environment which:
  - creates challenging learning opportunities that enable students to realise their full potential;
  - supports lifelong learning, creativity, practicality, a global imagination and ongoing professional development;
  - encourages participation in decision making and openness and co-operation in university relations;
  - celebrates diversity, and is stimulating, co-operative, and safe;
- has clearly defined responsibilities and accountabilities for staff and rewards excellent performance;
- comprises a number of local and international campuses, known for their distinctive areas of excellence in teaching and research, and interaction with the environment and the community.



**The values** that will characterise RMIT as an organisation, and will be embraced by both staff and students of the university are:

- client focus;
- quality;
- practicality and relevance;
- global imagination;
- cultural diversity;
- fairness to all;
- innovation and enterprise;
- environmental care;
- learning and personal growth;
- ethical behaviour and responsibility; and
- technological/professional orientation.

## Teaching and Learning at RMIT

- RMIT published and implemented its Student Feedback policy which aims to improve the experience of students at RMIT and to ensure that students have a voice in teaching and learning. The student feedback project forms an essential monitoring component in the university's quality assurance procedures.
- The Australian Technology Network (ATN) group of universities, which includes RMIT, was funded by the Commonwealth Department of Education, Training and Youth Affairs to investigate ways of designing curriculum, learning experiences and assessment to enhance the generic capabilities of university graduates.
- RMIT University has responded to the growing concerns in the academic and wider community of the social and academic pressures of transition to tertiary education by introducing a new program to all its commencing students to help them ease the leap from secondary school. 'RMIT 101—An Introduction to Tertiary Learning' is an orientation and induction program that aims to introduce all first year RMIT University Higher Education and TAFE students to the tertiary environment and assist them with a successful transition to tertiary education.
- Funding was received from the Office of Post-Compulsory Education, Training and Employment for the development and pilot delivery of a new program, the Diploma of Further Education. The Diploma of Further Education is an accredited program designed to facilitate the entry into university and TAFE courses of community learners and those who have experienced difficulties in traditional education or interrupted studies. Students are assisted within a community setting to clarify study goals, select from a range of accredited studies in order to test career options, and develop the skills to become independent, lifelong learners with the support of a teacher/mentor. The evaluation of the pilot showed that 82% of students gained entry to a wide range of tertiary education courses of their choice.
- RMIT University was successful in gaining seeding funding from the Office of Post-Compulsory Education, Training and Employment to establish a Learning Network with a range of metropolitan community providers located in central, western and northern regions of Melbourne. The purpose of the network was to facilitate the uptake of accredited learning by community learners using flexible modes of delivery including online. The Learning Network 'brokering' model has led to other innovative activities and partnerships such as the Hamilton Learning Centre and CISCO Learning Centre in regional Victoria.
- RMIT University established a project to facilitate the interpretation and uptake of qualifications linked to the newly accredited Training Packages in the TAFE area. This professional development program was highly successful in supporting Program Teams to enhance their skills in designing

learning pathways under the new frameworks. In conjunction with this work RMIT was approached by the Office of Post-Compulsory Education, Training and Employment to conduct a series of statewide workshops to increase system understanding of both the new teaching approaches required by Training Packages and the changes implied to reporting and recording requirements of Institutions. These workshops were highly successful and the resulting Issues Paper informed new policy development, government funding criteria and bureaucratic processes.

- Following a major project which made recommendations on the alignment of information technology with teaching and learning, significant strategic investment funds were allocated to provide both the infrastructure and staff capability to develop and deliver flexible learning. As part of this initiative, Directors of Information Technology and Learning Technology Mentors were appointed in all faculties to facilitate the development and delivery of flexible courseware.

### - *Online@RMIT*

RMIT University has committed itself to developing an online presence for all subjects through a comprehensive course and subject renewal initiative. The set of online tools (known as the Distributed Learning System) was used in over 200 subjects throughout 1999—by over 8000 students and 165 staff across all faculties. The initiative was supported by an extensive professional development program targeting Learning Technology Mentors in each faculty.

- New Career Connections, a joint project between RMIT University, RMIT Training Pty. Ltd. and Inner Northern and Western Region Group training companies was launched, which is a web-based information service linking job seekers with trainee and apprenticeship opportunities.
- RMIT University received an Honourable Mention from the Business/Higher Education Round Table for Outstanding Achievement in Collaboration in Education/Training for its strategic alliance with Morgan and Banks. The alliance brought together the two organisations' established expertise in education, employment and career management to provide a comprehensive suite of services to individual and industry clients as well as RMIT students.
- RMIT lecturer, Associate Professor George Fernandez received the Australian Award for University Teaching (Flexible Delivery/Learning). The award was presented by the Federal Minister for Education, Training and Youth Affairs, Dr David Kemp, at Parliament House, Canberra.
- RMIT University was re-certified to ISO 9001 for its quality management system for the design and delivery of award courses and programs up to degree level including the teaching and learning process and related support and monitoring services.





Don Anderson releases a meteorological balloon on Macquarie Island, to monitor ozone layer depletion in the region, watched by a young elephant seal. The research ship *Aurora Australis* is visible off shore.

## 1999 at RMIT

### January

Adventurers Eric Phillips, Jon Muir and Peter Hilary make it to the South Pole at 3.17 p.m. (Australian Eastern Standard Time) on 26 January 1999, after eighty-four gruelling days. State-of-the-art sleds designed by RMIT staff and students supported the explorers.

Informit Online, Australia's largest online collection of research databases on the Internet, was launched at the Darling Harbour Convention Centre in Sydney. An initiative of RMIT Publishing, Informit Online promises to be the major online resource of Australian bibliographic information and specialist databases. Informit Online will provide Internet access to a wide range of research databases from Australia, New Zealand and South-East Asia.

### February

RMIT regains the top position in Victoria for the number of first preferences for HECS places. An internal report, based on change of preference applications to the Victorian Tertiary Admissions Centre (VTAC) for 1999, shows an increase from 1998 to 1999 of 19.6 per cent in first preferences for HECS places at RMIT.

RMIT wins a major pilot training contract with China Northern Airlines to train pilots at Point Cook. The \$2million training program, for thirty pilots from China Northern, will be conducted jointly by RMIT and Victoria's largest flying school, General Flying Services.

RMIT and the Australian Army sign a contract worth over \$3.5million in the first year for the provision of technical and trades training and associated services (development, RPL, accreditation, student records) at the Army Logistic Training Centre in Wodonga.

### March

Former ANZ head Don Mercer was formally installed as RMIT's third Chancellor. In his speech delivered at the Melbourne Town Hall he spoke about funding, technology and the role of an international university in helping its regional neighbours.

The Chinese government, with funding from AusAID, focuses significant reform efforts on its vocational education system. RMIT's Faculty of Education, Language and Community Services and RMIT International Pty Ltd assist the Ministry of Education to begin the process of reform. The project is taking place in Chongqing, a mountainous municipality of thirty million people in the south-west of China.

Melanie Jones, 1997 World Cup Cricket winner, shared her experiences, challenges and achievements of being on the highly successful Australian Women's Cricket Team at RMIT Storey Hall. The address, *On The Ball*, was organised by the Women and Leadership Program as part of RMIT University's International Women's Day activities.

### April

RMIT celebrated its rich past on Heritage Open Day with re-enactment of the Ned Kelly trial in the Old Melbourne Magistrates' Court, and a host of guest speakers and displays.

Over 100 National Youth Science Forum (NYSF) participants from across the nation met at RMIT as part of a program which fosters their future role in the development of Australian science and technology.

### May

RMIT purchased the Capitol Theatre, including the 650-seat auditorium, foyer and linked upper-level lounge and foyer. One of the best-known works of Walter Burley Griffin and Marion Mahony Griffin, the Capitol Theatre and Capitol House are considered by many architects and historians as among the most important twentieth century buildings in Melbourne.

RMIT opened its new \$600,000 child-care centre in Bundoora with a performance of traditional Aboriginal dances by the Wurundjeri Children's Dance Group. The centre was named Numdaji Kwei, which means 'white mate', to celebrate the friendship between the Wurundjeri people and the new tenants of the site, which is set amongst heritage-listed Aboriginal 'scar trees'.

RMIT international students launched a gambling awareness campaign for students. The RMIT Association of International Students (RAIS) took the initiative to address issues relating to gambling that is affecting international and local students in Melbourne.

RMIT became Australia's first university to switch to an integrated financial, human resources and assets system to support its operations into the 21st century. The university selected SAP (Systems Applications Products in Data Processing) to provide the technology to achieve this goal, at a cost of \$8million.

### June

The success of RMIT's activities in Asia was tangible evidence of the university's capacity and strength as an exporter of education services to the region, said RMIT Vice-Chancellor and President Professor David Beanland. He was speaking after the announcement that RMIT won the 1999 Business Asia News Magazine Award for best Australian service activity in Asia.

The Ma Kam Ming International Management Centre was opened at Fudan University, China. The centre is a significant investment by RMIT University in the development and education of current and future business leaders and managers.

RMIT has been reviewing its current involvement in country Victoria and plans to extend several dynamic partnership programs that are already running. The basic premise of the new regional strategy, says its author, Deputy Vice-Chancellor Dr Ruth Dunkin, is that universities must relate to their local communities to be meaningful.



Aboriginal and Torres Strait Islander flags flew at RMIT's City campus, commemorating National Reconciliation Week. Professor Joy Murphy, an elder of the Wurundjeri People of the Kulin Nation (Melbourne region), and RMIT Deputy Vice-Chancellor (Education and Training) Professor David Knowles were present for the flag-raising ceremony.

Refugees arriving in Australia from Kosovo were able to communicate in their temporary new home with the help of RMIT-trained interpreters. Seventeen people from the local Albanian community worked as language aides in refugee 'safe havens' across Australia after completing the university's Albanian Interpreter Orientation Course.

Staff at a launch held at Storey Hall welcomed the first group of RMIT student ambassadors. The student ambassador program is an initiative of the alumni office and was established to provide an opportunity for students to become more involved in the university community.

RMIT sponsored two June 1999 performances by the Australian Ballet: *Singapore Trilogy*, as part of the Singapore Arts Festival, and *Don Quixote* in Shanghai.

## July

RMIT launched its Virtual Reality Centre (the first commercial virtual reality centre to be set up in Australia). The \$3million centre is located in the Interactive Information Institute (I-Cubed) at RMIT's City campus. In addition to being available to the RMIT community for education, research and development, the centre will offer small, medium and large businesses an opportunity to develop virtual solutions to a range of business processes.

## August

Hundreds of people celebrated cultural diversity when they paraded along Melbourne's Swanston Street to mark the official opening of RMIT's World Week 6 multicultural festival. Parade participants from community and cultural groups in Victoria (some dressed in colourful national costumes and playing music from around the world) carried flags from seventy-two countries.

Contributing more than \$900,000 over a three-year period, eighteen RMIT research scholarships are awarded to applicants from the East Gippsland region and across Australia. The scholarships aim to address issues relating to the sustainability of the East Gippsland Lakes ecosystems, which has become a key factor for the economic survival of the region.

## September

The Australian Technology Network (ATN) announced its general support for the principles of reform outlined in the Commonwealth Discussion Paper on Research and Research Training. The group of five technological universities particularly supports the philosophical shift the paper advocates for the research activities of universities. However, the ATN also called for more research funding. 'While other universities are now arguing that the government should continue to focus on underpinning basic research, the ATN agrees with the Green Paper that there should be a change of direction and a greater focus on the economic output of research,' said Professor David Beanland, ATN Chair and Vice-Chancellor of RMIT University.

RMIT announces plans to make research into e-commerce a priority research area for its business faculty. Professor Paula Swatman, a world authority on e-commerce, was appointed to lead the new program. Vice-Chancellor Professor David Beanland said that there would be

significant gains in concentrating the university's cross-disciplinary research in e-commerce in its business faculty.

Cutting-edge university research projects by final-year students from the university's Department of Communication and Electronic Engineering and Department of Computer Systems Engineering are unveiled at a technology and business conference. Engenius '99 showcased the best of Australia's young inventors from RMIT and groundbreaking advancements made in their last year of study. Some of the real-world student projects included a high-tech software system that recognised faces, impulse radars for remote sensing, an Internet call centre, lasers for moon ranging and microwave power amplifiers.

RMIT launched its first Postgraduate Week, introduced to meet the information needs of prospective postgraduate students. It featured evening information sessions hosted by all faculties and opportunities for one-to-one discussions with specialist staff.

The world's largest micro-chip maker and leading manufacturer of computer, networking and communications products, Intel, established its second Australian training centre at RMIT in Melbourne. The Intel Authorised Training Centre is set to assist Victoria in addressing the current IT skill shortage. It is estimated that about 3,000 people will graduate from the Melbourne centre over the next two years.





## October

The Mayor of Darebin City Council, Councillor Chris Kelly, helped launch a new virtual shopping mall site created by RMIT Business Information System students. The site contained details of 200 local businesses in High Street, Preston and is linked to the City of Darebin web site. The virtual mall is part of stage one of an initiative with the City of Darebin to promote the effective use of technology to benefit local residents.

Aurora 101, Victoria's entry in the World Solar Challenge, was the official winner of the pre-eminent solar race. It attracted an international field of entries, including factory teams from major car companies. It was the first Australian car to win the race. The solar supercar won with the support of a committed team of volunteers, including staff, alumni and students from RMIT and technical support, including aerodynamics testing, from the university.

A project to support carers of Australia's multicultural aged with dementia was launched. The project, 'Caring for a Person with Dementia—Audio Tape for Carers', is a collection of audio-taped training packages in seven community languages. Developed by a team from RMIT and the Australian Multicultural Foundation, the initiative is believed to be the first in Australia that assists carers of the multicultural aged with dementia.

## November

RMIT awarded new scholarships worth \$730,000 in total to 120 international students. The academic scholarships were awarded in the categories of postgraduate research; postgraduate coursework; undergraduate, technical and further education; pre-university courses; and faculty-specific awards.

Printing students from RMIT's Brunswick campus gained access to the most advanced industry technology available, with the announcement of a \$1.5million investment by Heidelberg Australia and Kodak Polychrome Graphics.

Dental health workers and educators in the Pacific Islands can now learn about techniques in basic infection control in Tonga, thanks to a training video developed by a team from RMIT and the Rotary Club of Ballarat West. The video provides clear, simple and easy-to-implement instructions to help hospital staff control the spread of infectious diseases.

Students from indigenous communities across Victoria united in Melbourne for a two-day celebration of their unique and diverse artworks. Organised by RMIT Textiles, 'Alive and Dreaming' was an exhibition showcasing vibrant paintings, drawings, screenprint design, ceramics, glass and textiles by more than fifty student artists from St Kilda, Morwell, Horsham, Broadmeadows, Echuca, Ballarat, Moorookna, Healesville and Hamilton. The artists are members of

RMIT Textiles' Aboriginal Development Unit, which supports vocational education and training in partnership with local Aboriginal communities.

Year Nine girls from secondary schools in the northern suburbs discovered the role computers play in diabetes research, medical radiation techniques and CPR. Their visit to the university's Faculty of Biomedical and Health Sciences and Nursing at the Bundoora campus was part of a program designed to broaden the computer career options considered by girls.

The Australian Research Council announced its research grants to universities for the triennium 2000 to 2002. RMIT University received: 537 research HECS exemptions; ten international postgraduate research scholarships; thirty-nine Australian Postgraduate Awards; \$189,000 in small research grants; seven Strategic Partnerships with Industry-Research and Training (SPIRT) Scheme projects, totalling \$540,000 over three years.



## December

RMIT's Training Centre for Infrastructure Technology within the Faculty of Engineering offered up to six scholarships to disadvantaged young people to help them improve their life. The scholarships appealed to students interested in the fields of surveying or mapping, geographic information and global positioning systems, or running a small business.

The Minister for State and Regional Development, the Hon John Brumby, signalled his support for a major project that will impact on education and community development in Victoria's Southern Grampians region. The plans include development of two initiatives: the RMIT Flexible Learning Centre, which will offer RMIT courses to people living and working in the region; and the RMIT Centre for Rural and Regional Development, which will undertake research on local issues and transfer the findings internationally.

RMIT's Vice-Chancellor and President, Professor David Beanland, welcomed the Government's White Paper on research. Professor Beanland said that the most important change in policy was the granting of equality of recognition and consideration to all types of research. 'Research leading to real-world outcomes in the community will at least be valued equally with research leading to advances in knowledge,' he said.

## Centres and institutes

### RMIT centres

- Centre for Advanced Technology in Telecommunications (CATT)
- Centre for Applied Social Research
- Centre for Design
- Centre for International Research on Communication and Information Technologies (CIRCIT)
- Centre for Management Quality Research
- Microelectronics and Materials Technology Centre
- Multimedia Database Systems Group
- Polymer Technology Centre
- Centre for Remote Sensing and Geographic Information Systems
- Rheology and Materials Processing Centre
- Software Engineering Research Centre
- Sir Lawrence Wackett Centre for Aerospace Design Technology
- Transport Research Centre
- Centre for Workplace Culture Change
- Centre for Youth Affairs Research and Development



### R&D enterprises

- Australian Housing and Urban Research Institute
- Environment Enterprise Institute
- Interactive Information Institute

### Advanced engineering centre

- Advanced Engineering Centre for Manufacturing

### Co-operative research centres

- Advanced Composite Structures
- Australian Photonics
- Australian Telecommunications
- Intelligent Manufacturing Systems and Technologies
- Microtechnology
- Polymers
- Water Quality and Treatment

### Key centre

- Applied and Nutritional Toxicology



RMIT lecturer Harold Freedman's *Legend of Fire* mosaic covers the wall of the Eastern Hill fire brigade headquarters and museum in Albert street, East Melbourne.

# Faculties, schools and departments

## Faculty of Applied Science

(Dean: Professor Terry Roberts)

### TAFE

- Department of Applied and Environmental Sciences

### Higher Education

- Department of Applied Chemistry
- Department of Applied Physics
- Department of Computer Science
- Department of Food Science
- Department of Land Information
- Department of Mathematics
- Department of Psychology and Intellectual Disability Studies

## Faculty of Art, Design and Communication

(Dean: Professor Robin Williams)

### TAFE

- Department of Creative Media
- Department of Printing
- RMIT Textiles
- Department of Visual Arts and Display

### Higher Education

- Department of Communication Studies
- Department of Fashion and Textile Design
- Department of Fine Art
- Department of Visual Communication

## Faculty of Biomedical and Health Sciences and Nursing

(Dean: Professor David Story)

### TAFE

- Department of Health and Clinical Sciences

### Higher Education

- Department of Anatomy and Physiology
- Department of Applied Biology and Biotechnology
- Department of Chiropractic, Osteopathy and Complementary Medicine
- Department of Human Movement Science
- Department of Medical Laboratory Science
- Department of Medical Radiations Science
- Department of Nursing and Public Health

## RMIT Business

(Acting Dean: Associate Professor Ray Brooks)

### Schools incorporate both TAFE and higher education:

- School of Accounting and Law
- School of Business Information Technology
- School of Economics and Finance
- School of Management
- School of Marketing

## Faculty of the Constructed Environment

(Dean: Professor Leon van Schaik)

### TAFE

- Department of the Built Environment

### Higher Education

- School of Architecture and Design
- Department of Building and Construction Economics
- Department of Landscape, Environment and Planning
- School of Social Science and Social Work

## Faculty of Education, Language and Community Services

(Dean: Professor Mary Kalantzis)

### TAFE

- Department of Access and Preparatory Studies
- Department of Social and Community Services

### Higher Education

- Department of Hospitality, Tourism and Leisure
- Department of Industry, Professional and Adult Education
- Department of Justice and Youth Studies
- Department of Language and International Studies
- Department of School and Early Childhood Education

## Faculty of Engineering

(Dean: Professor Robert Snow)

### TAFE

- Training Centre for Telecommunications, Computing and Electrotechnology
- Training Centre for Infrastructure Technology
- Training Centre for Manufacturing, Mechanical and Materials

### Higher Education

- Department of Aerospace Engineering
- Department of Chemical and Metallurgical Engineering (includes Polymer Technology Centre)
- Department of Civil and Geological Engineering
- Department of Communication and Electronic Engineering
- Department of Computer Systems Engineering
- Department of Electrical Engineering
- Department of Mechanical and Manufacturing Engineering



## Useful pages on the RMIT web site

<http://www.rmit.edu.au>  
(home page)

<http://www.rmit.edu.au/org-summary>  
(current organisational chart)

<http://www.rmit.edu.au/departments/secretariat/unicncl.html>  
(RMIT council)

<http://www.rmit.edu.au/About>  
(RMIT at a glance)

<http://www.rmit.edu.au/news>  
(RMIT news)

<http://www.rmit.edu.au/enews>  
(e-mail newsletter)

<http://www.admissions.rmit.edu.au>  
(prospective students)

<http://www.rmit.edu.au/Courses>  
(courses listings)

<http://www.ip.rmit.edu.au/internat>  
(RMIT international)

<http://www.tech-estate.rmit.edu.au>  
(RMIT technology estate)

<http://www.iii.rmit.edu.au>  
(i-cubed)

<http://www.capitol.rmit.edu.au>  
(capitol theatre)

<http://www.alumni.rmit.edu.au>  
(alumni)

<http://www.rmit.edu.au/Index>  
(site index and search)

<http://www.rmit.edu.au/maps>  
(campus maps)

<http://www.rmit.edu.au/Faculties>  
(list of faculties)

<http://www.rmit.edu.au/departments>  
(list of departments, training centres, schools)

<http://www.rmit.edu.au/departments/rd>  
(research and development)

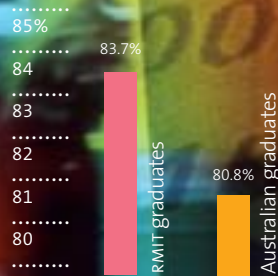
<http://www.teaching.rmit.edu.au/tlstrat>  
(teaching and learning strategy)

<http://www.ams.rmit.edu.au>  
(academic management system)

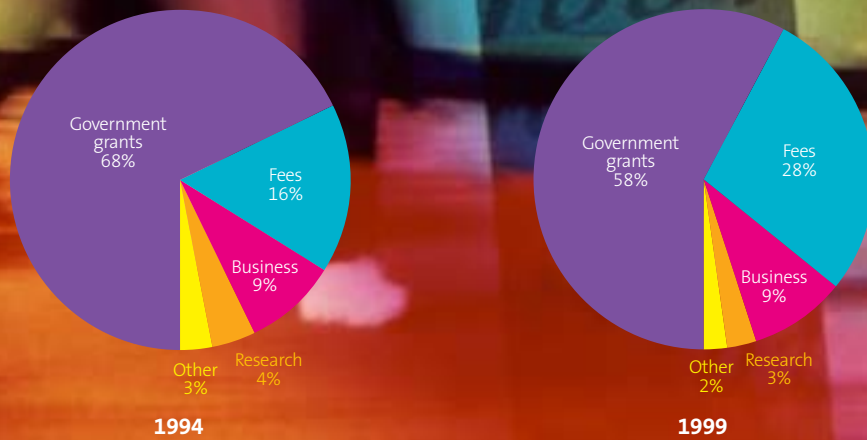


# RMIT at a glance: facts and figures

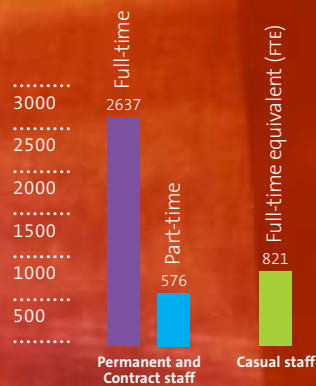
**Full-time employment level**  
Australian permanent resident bachelor degree graduates in 1999



**Comparative RMIT income, 1994 and 1999**



**Staffing profile of RMIT in September 1999**



## Research and Development

RMIT's research and development is characterised by innovative and quality solutions to real world problems, adding value to the community. The university has a strong reputation for its links with industry, with a large portion of its research funds coming from industry sources.

*The following is a selection of the many research and development projects undertaken at RMIT during 1999:*

### **Award-winning rice hull project generates income for markets**

An award-winning \$3million research partnership between RMIT and the Ricegrowers' Cooperative Ltd in NSW will potentially generate hundreds of millions of dollars for local and export markets and reduce environmental problems associated with the disposal of rice hulls.

The joint project is believed to be the first in the world to produce commercially viable extruded materials from this waste.

The project won the 1999 Industry Research and Development Board's national award for Outstanding Achievement in Collaborative Research and Development.



### **Heat pipe heat exchangers**

The Energy CARE group in RMIT's Department of Mechanical and Manufacturing Engineering has won several awards for its research and development work on heat pipe heat exchangers.

During 1999 Solahart commenced manufacture of a solar hot water system that uses a heat pipe device, developed by our researchers, to regulate the water temperature inside the system and prevent scalding accidents. The heat pipe has been carefully developed to automatically dissipate heat when a certain temperature has been reached. Because it has no moving parts the heat pipe is superior to valves which require regular maintenance.

### **Geospatial Science Initiative**

The RMIT Geospatial Science Initiative (RMIT GSI) (an initiative of RMIT's Department of Land Information) aims to create business and strategic partnerships, ensure the commercial application of the university's best R&D in the geospatial sciences, and grow the geospatial science industry in Victoria and nationally.

The RMIT GSI has already established commercial partnerships with the CSIRO, Department of National Resources and Environment (Victoria), the Bureau of Rural Sciences, Department of National Resources (Queensland) and several private companies.

### **Error correcting codes**

A research team in RMIT's Department of Mathematics have constructed new error-correcting codes which offer superior error correction capacity to existing methods in certain data storage, signals transmission and communications

applications. Information transmitted optically or electronically is coded to ensure data security or to detect and correct transmission errors. In laying the foundation for this work the researchers established a new class of codes, called cocyclic codes, within algebraic coding theory.

### **Efficient high-precision information retrieval**

In this project, a research team from RMIT's Multimedia

Database Systems Group has developed new variants of these efficient indexes and new ways of using these indexes to better identify which documents are likely to be relevant to the user. A particular success has been the development of techniques for finding documents based on whether they contain relevant passages, so that it is possible to identify pertinent pieces of text rather than having to fetch whole documents.

### **The rise and fall of a full employment society**

A project, conducted by the Centre for Applied Social Research, has

explored ordinary people's ideas about the meaning of work, and about the ways work and gender identity are related. At the core of the research are 200 interviews, half with older men and women of prime working age in the mid-1950s, and the other half with men and women in the same position today. This research has resulted in a detailed description of how ordinary people are experiencing profound transformations in Australian society and provides a basis for evaluating government policies in a number of labour market and income security areas.

### **RMIT and Ericsson launch Open Source server traffic manager**

Eddieware ('Eddie') Version 1.0 was released in May 1999 to the global marketplace as an Ericsson-sponsored Open Source effort, which has been developed with RMIT.

Eddie provides automatic traffic management and configuration of geographically distributed server sites. Eddieware relieves web site administrators of the burden of fine tuning their sites to make optimal use of capacity. Also, Eddie's inherent reliability will ensure that failed computers are automatically detected and their functions taken over by operational machines.

### **Influenza studies at RMIT**

RMIT's Professor of Virology, Gregory Tannock, is providing laboratory support for trials of an anti-influenza drug being developed by F.Hoffman La Roche Pty Ltd. The trials are being conducted in Australia, New Zealand and Hong Kong. The drug is a tablet treatment for a number of variants of the influenza virus. Four RMIT research students are currently doing PhDs on various aspects of influenza.





### Donation to help 'forgotten' catchment area

A donation to RMIT, valued at over \$400,000, by the Hewlett-Packard Chemical Analysis Group, will allow RMIT to work with industry and the community to address water catchment problems such as those faced in Westernport where approximately eighty per cent of seagrass meadows in the bay have been destroyed.

The donation builds upon the already-strong relationship between RMIT and Hewlett-Packard and will enable RMIT to greatly expand its chemical and environmental analysis capabilities.

### RMIT device tackles traffic dangers

The Sensor Technology Research Laboratory within RMIT's Department of Communication and Electronic Engineering has designed a vehicle cabin air quality monitor that aims to reduce driver fatigue and prevent motor vehicle exhaust gas suicides.

The device monitors air quality within the vehicle cabin (both oxygen and carbon monoxide levels) and triggers visual and audible alarm devices once a specified gas concentration has been detected.

The device also has the capacity to shut off motors or automatically switch air conditioning systems to 'fresh air' once danger levels have been reached.

The twelve-month research project has resulted in the development of a prototype device, which the RMIT team believe could be mass produced for as little as \$20 per unit.

### Research shows recycling saves energy, reduces emissions

While debate has often raged about spiralling costs and volatile markets for recycled materials, findings from the first stage of a research project reveal that the process is well worth the effort when it comes to protecting our environment.

The first stage of a study, commissioned by EcoRecycle Victoria, focused on council kerbside collections in the Melbourne metropolitan region.

Early findings reveal that energy savings from Melbourne's current recycling of three types of materials amount to five kilowatt-hours per week for each household, which is enough to run a light bulb for three days, or a bar heater for two hours.

EcoRecycle Victoria has agreed to fund part of the next phase of the study, which will include other kerbside materials collected in Victoria, as well as recycling and landfilling in some non-metropolitan areas.



### Bioethics: a Nursing Perspective

The third edition of Professor Megan-Jane Johnstone's internationally acclaimed text *Bioethics: a Nursing Perspective* was launched at RMIT in August.

*Bioethics: a Nursing Perspective* includes topics such as the sensitive issues of abortion, suicide and attempted suicide, female genital mutilation, the special needs and interests of people from non-English speaking backgrounds, not for resuscitation and not for treatment practices in Australian hospitals, patients' rights and conscientious objection.

### High hopes for Olympic athletes

RMIT is leading the research team whose project proposal is expected to revolutionise the use of altitude training by many of Australia's Olympic athletes in the lead-up to the Sydney 2000 Games and beyond. Using the BOC Altitude House at the Australian Institute of Sport in Canberra, the research project aims to confirm findings that reverse previ-

ous assumptions about altitude training.

John Hawley, Professor of Human Movement Science at RMIT's exercise metabolism unit, is the project's team leader. He predicts the research will provide strong scientific evidence that athletes involved in events with a high anaerobic component (runners of distances from 400 to 3000 metres, track cyclists and kayakers) have more to gain from altitude training than do endurance athletes such as marathon runners.

The researchers hypothesise that aerobic capacity is actually reduced and anaerobic capacity enhanced after altitude training. This contradicts past strongly held beliefs that endurance athletes' performance might benefit most from altitude training.

### Conferences

RMIT has played host to a number of important research conferences this year including:

- Australian Crime Prevention Council's 19th Biennial International Conference on Preventing Crime;
- the 1999 Australian Vocational Education and Training Research Association (AVETRA) Conference; and
- the Third International and Sixth National Research Conference on Quality Management.

## International activities

In 1999 international activities continued to make a strong contribution to RMIT's goal of creating and sustaining a distinctive, world-class university, as well as creating a sense of global understanding and imagination in students, staff and clients.

International student numbers exceeded 12,000. At 6,855, the number of international students enrolled in onshore studies is a record figure, and represents a substantial growth of 11 per cent over that achieved in 1998.

The number of offshore international students studying RMIT courses at



partner institutions in 1999 was 5,270, which represents an increase of two per cent over 1998. RMIT delivered 46 offshore

award programs at partner institutions in the Asian region with significant growth occurring in both Singapore and China.

Much of the growth in China can be attributed to the successful marketing of course programs coupled with the delivery of services, particularly in the areas of flight training for Chinese aviation personnel; health; TAFE; international trade; and urban planning.

Highlights of commercial work in collaboration with Chinese partners in 1999 include:

- 94 Chinese pilots and aviation personnel trained at the RMIT Flight Training facility at Point Cook, Melbourne; also in Melbourne, 49 Chinese captains and first officers from China Northern Airlines trained in Pilot English proficiency; and Pilot English training courses delivered to Chinese trainee pilots from Guanghan;
- the first cohort of 23 students graduating from the Master of Business Administration in Aviation Management, a program jointly delivered by RMIT and the Civil Aviation University of China (the program is conducted both onshore in Melbourne and in China);
- activities in the TAFE area included a project in China to demonstrate how the Australian VET system works, as well as designing a project in association with the Overseas Projects Corporation of Victoria to assist the Government of China to improve its VET system.

During 1999 RMIT commenced a business studies program at Wuhan University in China. RMIT has also established an office in Wuhan to process applications, handle student enquiries and liaise with the Australian embassy in Beijing.

In 1999, RMIT was granted a provisional investment licence by the Government of Vietnam to establish a fully foreign-owned private university in Ho Chi Minh City.

New offshore programs that commenced in 1999 include the Bachelor of Applied Science partnership with Informatics Holdings, Singapore; and the Bachelor of Business (Business Administration) and the Bachelor of Business (Economics and Finance) in partnership with the Hong Kong Management Association.

The university also continued its commitment to offshore graduations, offering its international stu-

dents the opportunity to graduate in Melbourne, Singapore, Kuala Lumpur, Tokyo, Hong Kong SAR and Wuhan.

New contracts were signed with a number of major offshore partners including the Singapore Institute of Management and the Vietnam National University, Hanoi. Contracts were also signed with International Education Programs (LP3I) Indonesia to commence the Diploma of Applied Science in March 2000 and with the Hong Kong Management Association to commence the Bachelor of Business Accountancy and the Master of Business Accountancy in March 2000.

The Master of Business Administration (MBA) in International Trade program was consolidated and extended. This program is offered in collaboration with the Singapore Institute of Management, the Hong Kong Management Association, and the Australian Institute of Management.

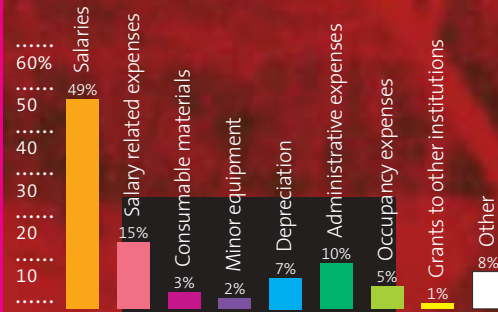
In more established markets RMIT sought to consolidate its offshore program links to focus on building business with existing partners rather than increase the number of programs in a particular country. In 1999 links were strengthened with the Singapore Institute of Management, LaSalle-SIA College of the Arts (Singapore), Malaysian Institute of Management, Metropolitan College (Malaysia), and Hong Kong Management Association.

The development of ongoing relations with international alumni continued to be of strategic focus. In 1999 major events for international alumni in Asia were held in Kuala Lumpur, Hong Kong SAR, Singapore, Thailand and Hanoi.

RMIT maintains a number of agreements ranging from student and staff exchange, to those of research co-operation. These totalled over 150 in 1999.

In 1999, RMIT had over 450 students participating in education abroad activities worldwide, including exchange and study abroad programs, study tours and international work placements.

### Consolidated operating expenses 1999



### Consolidated operating expenses 1998 – 1999

	1999 \$ ,000	1998 \$ ,000
Salaries	186,259	176,192
Salary related expenses	57,131	52,399
Consumable materials	13,466	9,870
Minor equipment	9,292	9,490
Depreciation	26,576	25,397
Administrative expenses	37,893	38,862
Occupancy expenses	17,975	21,817
Grants to other institutions	2,602	5,567
Other	29,288	16,600
<b>Total operating expenses</b>	<b>380,482</b>	<b>356,194</b>

### Consolidated operating revenue 1998 – 1999

	1999 \$ ,000	1998 \$ ,000
Government grants	241,159	226,489
Research grants and contracts	11,015	9,824
Fees and charges	118,528	96,913
Commercial activities	40,184	32,215
Investment income	4,706	3,430
Donations and bequests	2,206	2,099
Sale of property, plant and equip.	1,375	1,500
Deferred income	4,721	-
Other	2,328	2,578
<b>Total operating revenue</b>	<b>426,222</b>	<b>375,048</b>

### Higher Education (HE) and TAFE student enrolments by gender

	1995	1996	1997	1998	1999
<b>HE</b>					
Female	12,908	13,408	13,947	14,462	15,163
Male	13,398	13,823	14,193	14,734	15,282
<b>Sub-total</b>	<b>26,306</b>	<b>27,231</b>	<b>28,140</b>	<b>29,196</b>	<b>30,445</b>
<b>TAFE</b>					
Female	5,597	6,428	6,494	8,415	9,974
Male	9,832	10,091	9,505	10,841	12,745
<b>Sub-total</b>	<b>16,339</b>	<b>16,339</b>	<b>15,999</b>	<b>19,526</b>	<b>22,719</b>
<b>Total</b>	<b>42,645</b>	<b>43,570</b>	<b>44,139</b>	<b>48,722</b>	<b>53,164</b>

## Honours conferred in 1999

### Honorary degrees

An honorary degree recognises the recipient's distinguished contribution to learning, the arts or public service.

- Tarcissius Chin Honorary Doctor of Business (Hon. DBus)
- Akio Makigawa Honorary Doctor of Arts (Hon. DArts)

### Francis Ormond Medallist 1999:

#### Arthur Clover, Judy Greig (co-winners)

The Francis Ormond Medal recognises distinguished service by a staff member who has not been awarded an honorary degree or appointed to a senior management position.

### Emeritus Professors appointed

- William (Bill) Gregory Art, Design and Communication
- Ray Stebbins Art, Design and Communication

### Adjunct Professors appointed

An Adjunct Professor is recognised as a person of eminence in a profession or industry.

- Lindsay Heywood Research and Development
- Alan Rodger Biomedical and Health Sciences and Learning
- Ian Macreadie Biomedical and Health Sciences and Learning
- David Stalker Biomedical and Health Sciences and Learning
- Ivan Deveson Business
- Christopher Christodoulou Business
- Graham O'Neill Business
- Meigu Guan Business
- John Hooper Engineering
- Josef Tomas Engineering
- Moira Rayner Constructed Environment
- Loula Rodopoulos Constructed Environment
- Neil McLachlan Constructed Environment
- Christopher Paris Constructed Environment

### Visiting Professors

A Visiting Professor is normally a member of the teaching or research staff of another educational or research institute.

- Samuel Ho Research and Development
- Gottfried Jaeger Art, Design and Communication
- Gerald Meininger Biomedical and Health Sciences and Nursing

### Visiting Fellows

- Eileen Drew Research and Development
- Martin Spring Research and Development
- Sek-hong Ng Business

### Professorial Fellows appointed

- Anthony Hughes Applied Science
- Lyn Littlefield Applied Science
- Peter Paterson Applied Science
- Tom Steiner Engineering
- Michael Bannister Engineering
- Adrian Mouritz Engineering

### Professors appointed

- Fazal Rizvi International
- Neil Furlong Research and Development
- Malcolm McCormick Applied Science
- Suresh Bhargava Applied Science
- Gay Edgecombe Biomedical and Health Sciences and Nursing
- Margaret Jackson Business
- Robert Brooks Business
- Robin Usher Education, Language and Community Services
- Felicity Roddick Engineering
- Israel Herszberg Engineering

### Associate Professors appointed

- Lindsay Heywood Research and Development
- Isaac Balbin Applied Science
- Bill Cartwright Applied Science
- Basil de Silva Applied Science
- George Fernandez Applied Science
- Gary Fitz-Gerald Applied Science
- Barry Meehan Applied Science
- Zahir Tari Applied Science
- Peter Ellis Art, Design and Communication
- Kevin White Art, Design and Communication
- Julianne Reid Biomedical and Health Sciences and Nursing
- Bobby Banerjee Business
- David Maunder Education, Language and Community Services
- Hema Sharda Engineering
- Sylvester Abanteriba Engineering
- Douglas Swinbourne Engineering
- Harriet Edquist Constructed Environment
- Gary Hough Constructed Environment
- Jock McCulloch Constructed Environment
- Pavla Miller Constructed Environment
- John Murphy Constructed Environment

## Senior officers in 1999



*Untitled study* by Nick Mourtzakis.  
Photo courtesy Art Gallery of New South Wales.

### **Vice-Chancellor and President**

Professor David Beanland

### **Deputy Vice-Chancellor and Vice-President**

Dr Ruth Dunkin

### **Deputy Vice-Chancellor (Resources)**

Professor John Jackson

### **Deputy Vice-Chancellor (Education and Training)**

Professor David Knowles

### **Pro Vice-Chancellor (Teaching and Learning) and Director (TAFE)**

Professor Helen Praetz

### **Pro Vice-Chancellor (Academic Services and Equity)**

Associate Professor Robert Gray

### **Pro Vice-Chancellor (Research and Development)**

Professor Neil Furlong

### **Pro Vice-Chancellor (International)**

Professor Fazal Rizvi

### **Executive Director Major Projects**

Professor David Wilmoth



*Balloon lights* designed by Nicholas Rennie.

With a special university grant, lecturer Kjell Grant took the furniture designs of nine 1999 graduates to be showcased at the cutting edge Milan Furniture Fair 2000 in April.

